



OTG11353B

ZIM | HIGH BACK HEIGHT ADJUSTABLE STOOL

The Zim height adjustable task stool combines timeless design with practical functionality. Its wraparound mesh back delivers breathable comfort and support, while the height adjustable frame adapts seamlessly to a variety of worksurfaces. Designed for versatility, Zim is perfect for collaborative spaces, labs and touchdown areas where flexibility and comfort are essential.

- task mechanism
- wraparound mesh back design
- height adjustable T-arms with soft urethane armcaps
- pneumatic seat height adjustment
- height adjustable Chrome footrest

- dual wheel carpet casters
- Black polyester seat with a Black mesh back

Upholstery Options:

| | |
|------|-----------------|
| Back | Mesh - Black |
| Seat | Black polyester |



Specifications

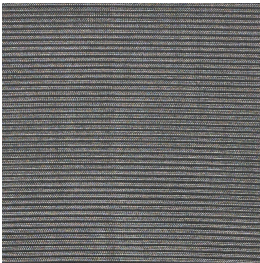
Dimensions: 25.5"W x 24.25"D x 50.75"H

Seat Height: 24.25" - 32"

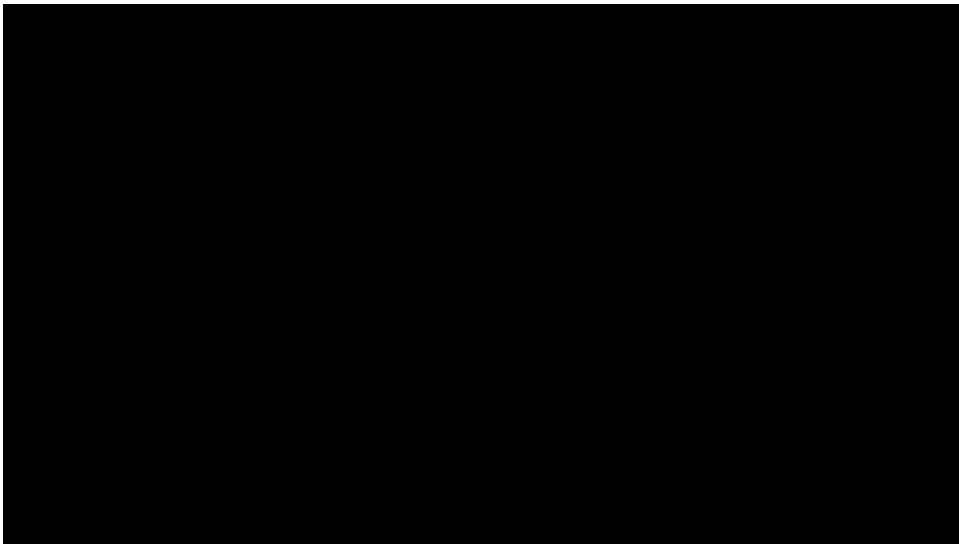
Weight: 44 lbs / 20 kg

Volume: 6.25 ft³ / 0.18 m³

Mesh Back



Black



Showcase | 1:01

ZIM

Ergonomics



Seat Height



Arm Height



Waterfall Seat Edge



Contoured Cushions