



OTG11351AB

ZIM | BLACK HIGH BACK WEIGHT SENSING SYNCHRO-TILTER

The Zim chair boasts a timeless design with functional features. Its unique wraparound mesh back beautifully sculpts the chair and provides comfort and breathability. Zim's weight sensing mechanism regulates the chair tilt tension according to the user's weight, making it ideal for shared spaces such as touchdown stations or meeting room environments.

- Synchro-tilt mechanism
- Wrap around mesh back design
- Black polyester seat with a Black mesh back
- Height adjustable T-arms with soft urethane armcaps
- Multi position tilt-lock and weight sensing tension

- Seat depth adjustment
- Pneumatic seat height adjustment
- dual wheel carpet casters
- optional adjustable mesh headrest is available - [OTG11352](#)
- model with Grey mesh back available – [OTG11351AG](#)

Upholstery Options:

Back	Mesh - Black
Seat	Black polyester



Specifications

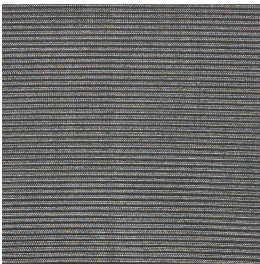
Dimensions: 26"W x 24.5"D x 43"H

Seat Height: 18" - 22.5"

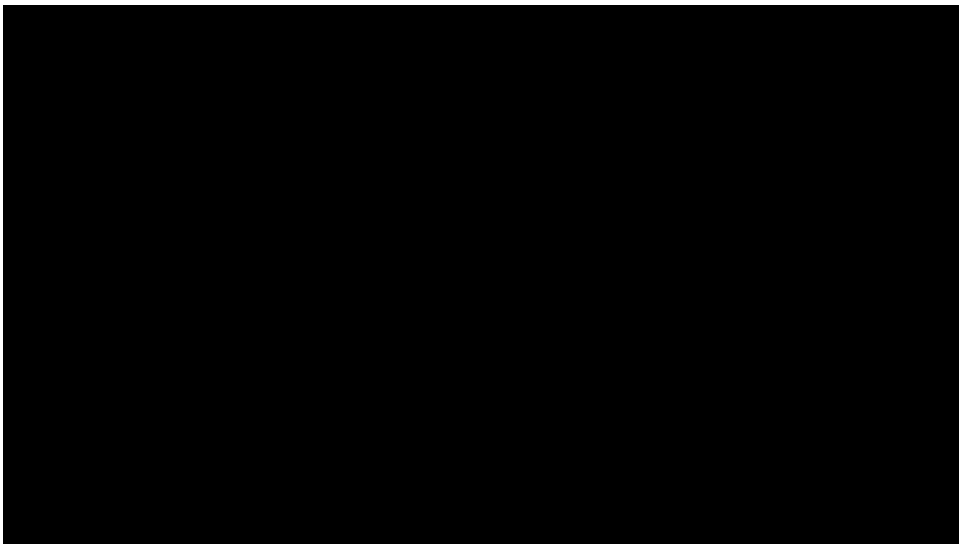
Weight: 37.5 lbs / 17.0 kg

Volume: 5.75 ft³ / 0.16 m³

Mesh Back



Black



Showcase | 1:01

ZIM

Ergonomics





Chair Tilt Lock



Seat Height



Seat Depth



Arm Height



Synchro-Tilt
Movement



Waterfall Seat Edge



Contoured Cushions