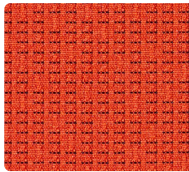
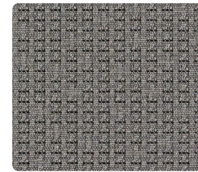


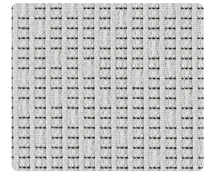
**DASH** Dove



Flame



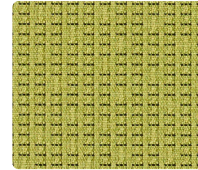
Fossil



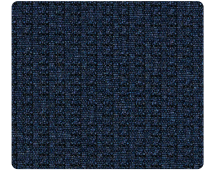
Cloud



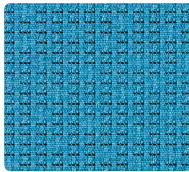
Jet



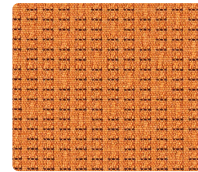
Lime



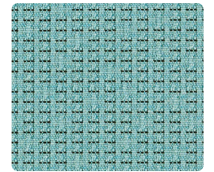
Midnight



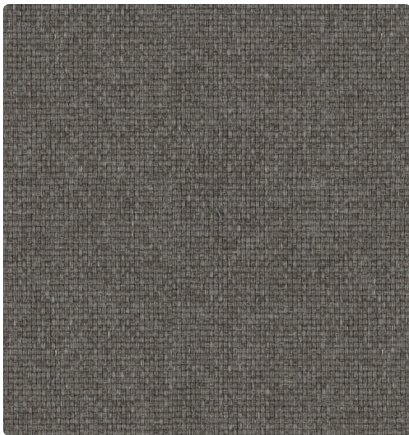
Sky



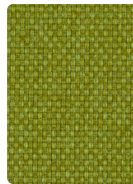
Squash



Tiffany



**SPICE** Caraway



Apple



Chai



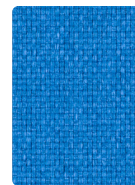
Nutmeg



Fire



Caraway



Electric Blue



Navy



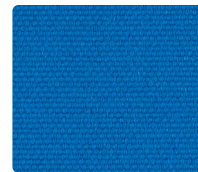
Peppercorn



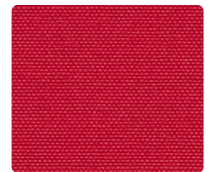
**SUGAR** Apple



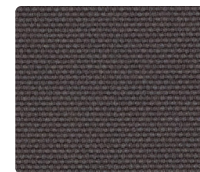
Desert



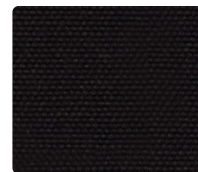
Electric Blue



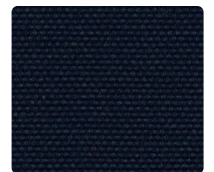
Fire



Kiss



Licorice



Navy


specification and technical information


Pattern	Content	Abrasion Resistance (Double Rubs)	Finish	CAL 133	Cleaning Code	Grade
Dash*	94% Post-Consumer Recycle Polyester, 6% Pre-Consumer Recycled Polyester	100,000	Clean Coat	133	WS BC (1:10)	1
Spice	100% Polyester	75,000	Water Repellent	133	WS	1
Sugar	100% Polyester	120,000	Water Repellent	133	WS	1


\* Healthier Hospitals Compliant


These patterns meet or exceed these ACT Performance standards for upholstery:     


icon upholstery definitions


- 

**Fire Retardancy**  
Flammability testing determines a fabric's resistance to burning. Passes Cal 117.
- 

**Colorfastness to Wet and Dry Crocking**  
The rubbing off of color from fabric onto clothing, hands or other materials and can occur under wet or dry conditions. Passes AATCC 8-1974 Dry Crocking. Class 4 minimum, Wet Crocking. Class 3 minimum.
- 

**Colorfastness to Light**  
The degree to which fabric will retain its color when exposed to light. Passes AATCC 16A-1974 or AATCC 16E-1976. Class 4 minimum at 40 hours. Note: Class 4 minimum at 60 hours is recommended for direct sunlight exposure.
- 

**Physical Properties**  
Brush Pilling Test determines a fabric's pilling. Breaking/Tensile Strength Test determines the ability of a fabric to withstand tension without breaking or tearing. Seam Slippage Test determines the pulling apart of fabrics at the seams. Passes Brush Pilling ASTM D3511, 3-4 minimum, Breaking Strength ASTM D3597-D1682-64 (1975) 50 lbs. minimum in warp & weft, Seam Slippage ASTM D3597-D434-75 25 lbs. minimum in warp & weft.
- 

**Abrasion**  
The ability of a fabric to withstand damage from wear and rubbing. Passes Heavy Duty Contract ASTM 3597 modified (No.10 cotton duck); 30,000 double rubs Wyzenbeek Method or ASTM 4966 modified (with 21 oz. wt.); 40,000 rubs Martindale Method.
- 

**CAL 133**  
These fabrics can be used in combination with other designated SitOnIt Seating components to meet the California Technical Bulletin 133 standard for furniture flammability. Cal 133 has been tested and approved for SitOnIt products.

Cleaning Codes

- BC: Bleach Cleanable. Bleach Cleanability is desirable for any fabric that may need to be disinfected or sterilized.
- WS: Clean with water-based cleaning agents, foam or pure, water-free solvents (Energine, Carbona, Renuzit or other similar products). Vacuuming or light brushing is recommended to prevent dust or soil buildup.

Finish Definitions

- Clean Coat A topical finish that creates an invisible protection which prevents liquids or stains from penetrating the fiber which makes it much easier to remove the soils and stains.
- Water Repellent A finish that reduces the risk of water or other liquids penetrating through the material and soiling the foam of the product.

**Memo Samples** To order samples, call 714.995.4800 or contact your local SitOnIt Seating sales rep.

NOTE: Multiple factors affect fabric durability and appearance retention, including end-user application and proper maintenance. Wyzenbeek results above 100,000 double rubs have not been shown to be an indicator of increased lifespan.