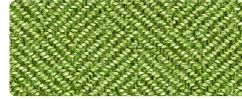
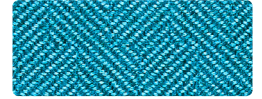




HUNTINGTON Fleece



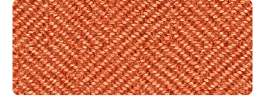
Clover



Splash



Iron



Starfish



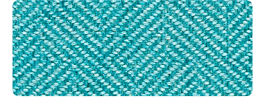
Night



Natural



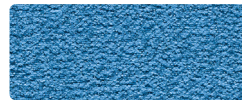
Meteor



Tropical



MALIBU Charcoal



Cobalt



Lemongrass



Navy



Oat



Orange



Violet



Ruby



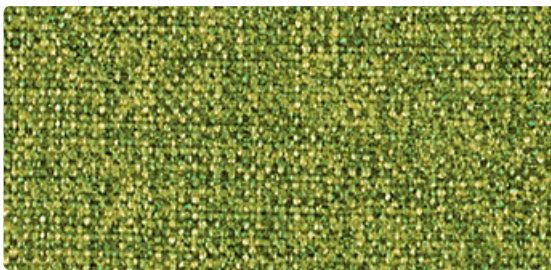
Smoke



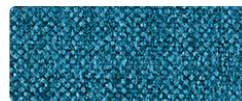
Soot



Molasses



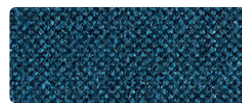
VENICE Apple



Blue Skies



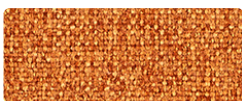
Carbon



Deep Sea



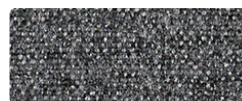
Gold Dusk



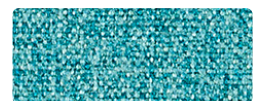
Sundown



Sandstorm



Milestone



Mainstream


specification and technical information


Pattern	Content	Abrasion Resistance (Double Rubs)	Finish	CAL 133	Cleaning Code	Grade
Huntington*	100% Polyester	75,000	Clean Coat	133	WS	1
Malibu	98% Polyester, 2% Nylon	95,000+	i-clean™	133	W	1
Venice*	100% Polyester	100,000	Clean Coat	133	W	1


* Healthier Hospitals Compliant


These patterns meet or exceed these ACT Performance standards for upholstery:     


icon upholstery definitions


- 

Fire Retardancy
Flammability testing determines a fabric's resistance to burning. Passes Cal 117.
- 

Colorfastness to Wet and Dry Crocking
The rubbing off of color from fabric onto clothing, hands or other materials and can occur under wet or dry conditions. Passes AATCC 8-1974 Dry Crocking. Class 4 minimum, Wet Crocking. Class 3 minimum.
- 

Colorfastness to Light
The degree to which fabric will retain its color when exposed to light. Passes AATCC 16A-1974 or AATCC 16E-1976. Class 4 minimum at 40 hours. Note: Class 4 minimum at 60 hours is recommended for direct sunlight exposure.
- 

Physical Properties
Brush Pilling Test determines a fabric's pilling. Breaking/Tensile Strength Test determines the ability of a fabric to withstand tension without breaking or tearing. Seam Slippage Test determines the pulling apart of fabrics at the seams. Passes Brush Pilling ASTM D3511, 3-4 minimum, Breaking Strength ASTM D3597-D1682-64 (1975) 50 lbs. minimum in warp & weft, Seam Slippage ASTM D3597-D434-75 25 lbs. minimum in warp & weft.
- 

Abrasion
The ability of a fabric to withstand damage from wear and rubbing. Passes Heavy Duty Contract ASTM 3597 modified (No.10 cotton duck); 30,000 double rubs Wyzenbeek Method or ASTM 4966 modified (with 21 oz. wt.); 40,000 rubs Martindale Method.
- 

CAL 133
These fabrics can be used in combination with other designated SitOnIt Seating components to meet the California Technical Bulletin 133 standard for furniture flammability. Cal 133 has been tested and approved for SitOnIt products.

Cleaning Codes

- W: Water-based cleaning agents or foam may be used.
CAUTION: Use of water-based or detergent-based solvents may cause spotting, shrinking and/or permanent water stains.
Solvent cleaning agents will remove water stains.
- WS: Clean with water-based cleaning agents, foam or pure, water-free solvents (Energine, Carbona, Renuzit or other similar products).
Vacuuming or light brushing is recommended to prevent dust or soil buildup.

Finish Definitions

- Clean Coat

A topical finish that creates an invisible protection which prevents liquids or stains from penetrating the fiber which makes it much easier to remove the soils and stains.
- i-clean™

Utilizing nano base technology, spills bead up and sit on the fabric until they are gently blotted with a cloth for clean-up.

Memo Samples To order samples, call 714.995.4800 or contact your local SitOnIt Seating sales rep.

NOTE: Multiple factors affect fabric durability and appearance retention, including end-user application and proper maintenance. Wyzenbeek results above 100,000 double rubs have not been shown to be an indicator of increased lifespan.